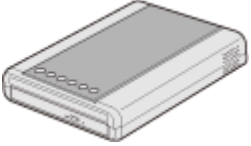



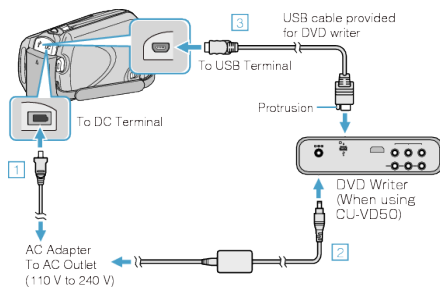
## Playing Back a DVD Created on this Unit

DVDs created using the backup function on this unit can be played back on TV using an optional DVD writer with playback function (CU-VD50U) or a normal DVD player. They can also be played back on this unit by connecting the optional DVD writer with playback function (CU-VD50U).

Playback Device	Illustration
DVD writer with playback function (CU-VD50U)	
DVD player or DVD recorder that supports the DVD-Video standard	

### Playing Back with a DVD Writer

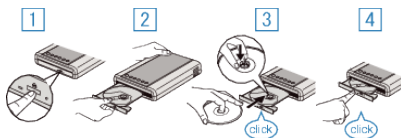
1 Close the LCD monitor and connect.



- ① Connect the AC adapter to this unit.
- ② Connect the AC adapter of the DVD writer.
- ③ Connect the USB cable provided with the DVD writer.

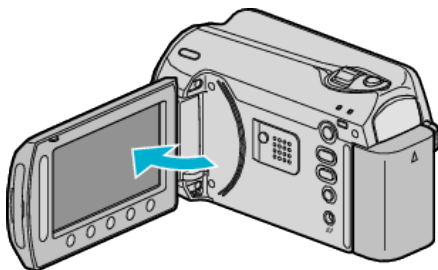
• To view on a TV, connect this unit to the TV.

2 Load a DVD created on this unit into the DVD writer.



- ① Press the power button to turn on the power.
- ② Press the eject button to open the disc tray.
- ③ Pull out the tray completely and load a new disc properly.
- ④ Push the disc tray in until it clicks into place.

3 Open the LCD monitor.



• The CREATE DVD menu appears.

4 Select "PLAYBACK" and touch **OK**.



• Playback starts.

### CAUTION:

- Be sure to turn off the power when connecting the devices. Otherwise, electric shocks or malfunctions may occur.

### NOTE:

- Only DVDs created on this unit can be played back.
- Chapters are not displayed on the menu.

### Digest Playback

You can view a few seconds of each video in the disc continuously by playing back the created disc in a player and selecting "DIGEST PLAYBACK" from the top menu. Use this to check the content of videos or to look for the desired scene.

- To return to normal playback, press the top menu button on the remote control of the player and select "TO NORMAL PLAYBACK".

