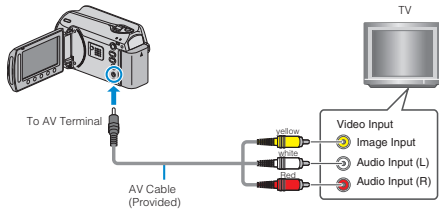


## Connecting to and Viewing on TV

By connecting the supplied AV cable to the video terminal, videos can be played back on a TV.

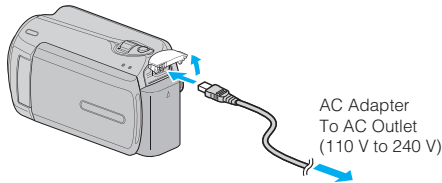
- Refer also to the instruction manual of the TV in use.

1 Connect to the TV.

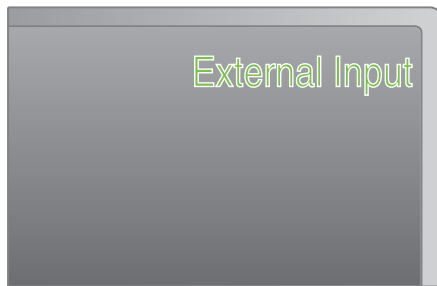


- Press and hold the power button for 2 seconds or more to turn off the power.

2 Connect the AC adapter to this unit.



3 Press the external input button on the TV to switch to the input from this unit via the connected terminal.



4 Play back a file.



**Memo:**

- To play back with date/time display, set "DISPLAY ON TV" in the connection settings menu to "ON". Set "ON-SCREEN DISPLAY" in the playback menu to "DISPLAY ALL" or "DISPLAY DATE ONLY".
- For questions about the TV or method of connection, contact your TV's manufacturer.

## Unnatural Displays on TV

Trouble	Action
Images do not appear on the TV properly.	<ul style="list-style-type: none"> <li>• Disconnect the cable and connect again.</li> <li>• Turn off and on this unit again.</li> </ul>
Images are projected vertically on the TV.	<ul style="list-style-type: none"> <li>• Set "VIDEO OUTPUT" in the connection settings menu to "4:3".</li> </ul>
Images are projected horizontally on the TV.	<ul style="list-style-type: none"> <li>• Adjust the TV's screen accordingly.</li> </ul>