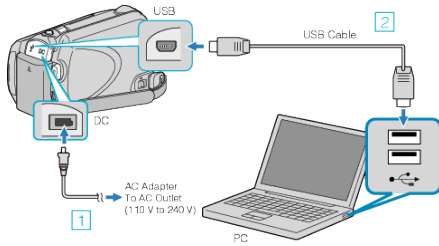


Backing Up All Files

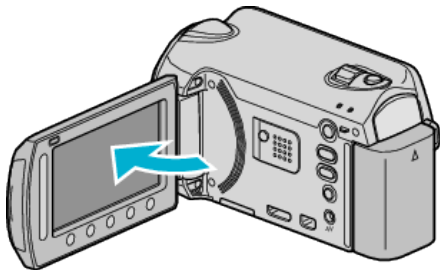
Before making backup, make sure that enough free space is left in the PC's hard disk (HDD).

1 Connect the USB cable and AC adapter.



- ① Connect the AC adapter to this unit.
- ② Connect using the provided USB cable.

2 Open the LCD monitor.



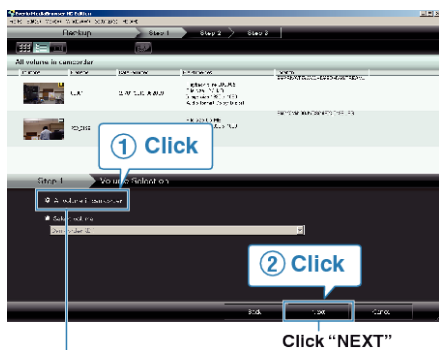
- The USB MENU appears.

3 Select "BACK UP" and touch **OK**.



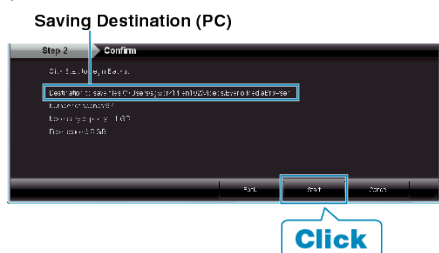
- The provided software Everio MediaBrowser starts up on the PC. The subsequent operations are to be performed on the PC.

4 Select the volume.



Click "All volume in camcorder"

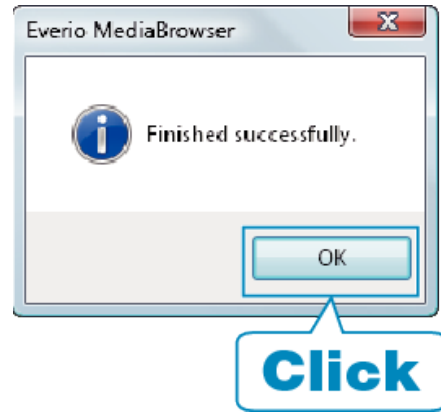
5 Start backup.



Click

- Backup starts.

6 After backup is complete, click "OK".



NOTE:

- Before making backup, load the microSD card in which the videos and still images are stored on this unit.
- If you encounter any problems with the provided software Everio MediaBrowser, please consult the "Pixela User Support Center".
- Delete unwanted videos before making backup. It takes time to back up many videos.

Disconnecting this Unit from PC

1 Click "Safely Remove Hardware".



2 Click "Safely Remove USB Mass Storage Device".

3 (For Windows Vista) Click "OK".

4 Disconnect the USB cable and close the LCD monitor.