

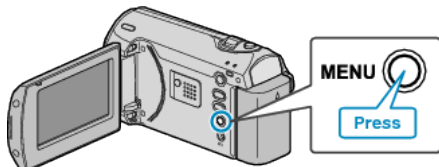
LCD BACKLIGHT

Sets the brightness of the backlight of the monitor.

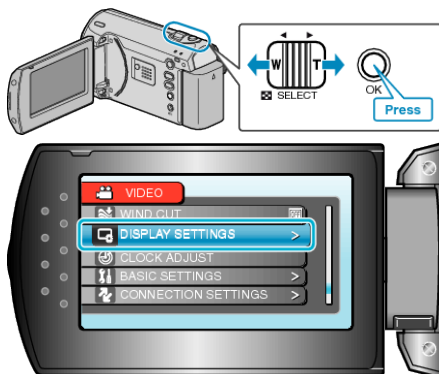
Setting	Details
BRIGHTER	Brightens the backlight of the monitor regardless of the surrounding conditions.
STANDARD	Helps to save battery life when selected.
AUTO	Sets the brightness automatically to “BRIGHTER” when using outdoors and to “STANDARD” when using indoors.

Displaying the Item

1 Press MENU to display the menu.



2 Select “DISPLAY SETTINGS” with the ZOOM/SELECT lever and press OK.



3 Select “LCD BACKLIGHT” and press OK.

