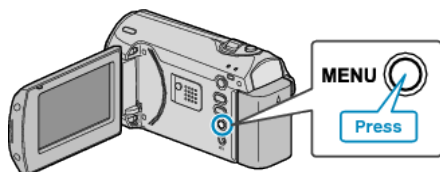


Operating the Menu

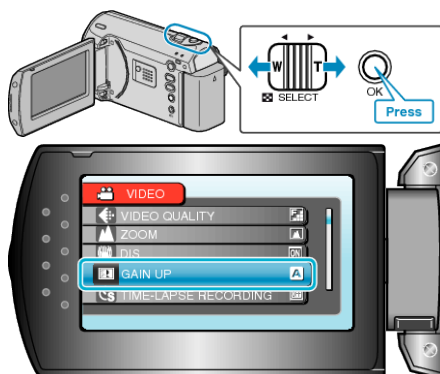
Use the ZOOM/SELECT lever and OK button to set the menu.

- The menu differs according to the mode in use.

1 Press MENU to display the menu.



2 Select the desired menu with the ZOOM/SELECT lever and press OK.



3 Select the desired setting and press OK.



Memo:

- To return to the previous screen, press MENU.
- To close the menu, press MENU a few times.

Returning All Settings to Default :

- Set using "FACTORY PRESET" in the camera settings menu.