

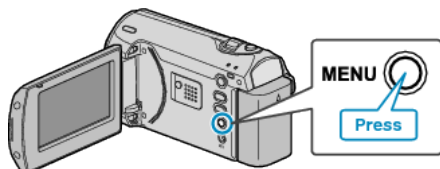
OPERATION SOUND

Turns on or off the operation sound.

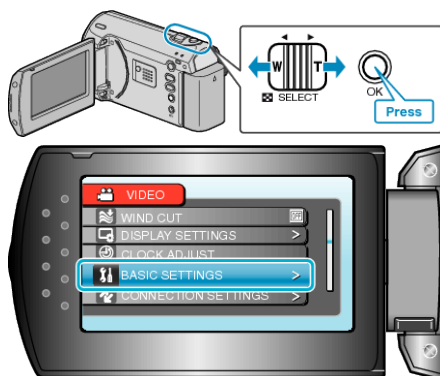
Setting	Details
OFF	Turns off the operation sound.
ON	Turns on the operation sound.

Displaying the Item

1 Press MENU to display the menu.



2 Select "BASIC SETTINGS" with the ZOOM/SELECT lever and press OK.



3 Select "OPERATION SOUND" and press OK.

