

**QUICK RESTART**

Enables recording to be performed immediately when the LCD monitor is opened.

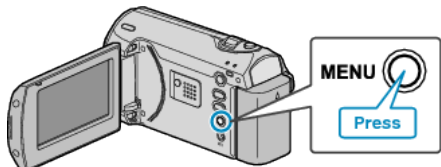
Setting	Details
OFF	Deactivates the function.
ON	Enables the power to turn on quickly when the LCD monitor is opened again within 5 minutes.

**Memo:**

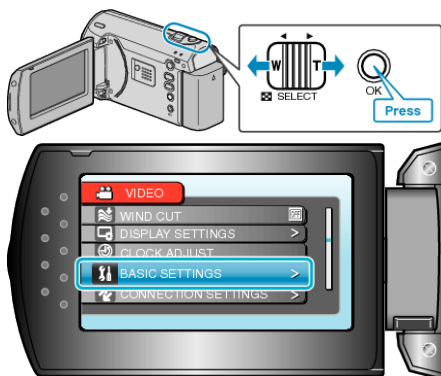
- The power consumption within 5 minutes after the LCD monitor is closed is reduced to 1/3 of that used during recording.

**Displaying the Item**

1 Press MENU to display the menu.



2 Select "BASIC SETTINGS" with the ZOOM/SELECT lever and press OK.



3 Select "QUICK RESTART" and press OK.

