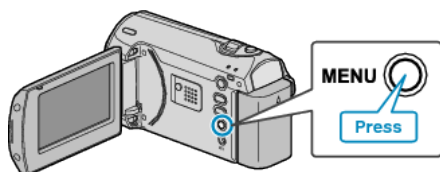


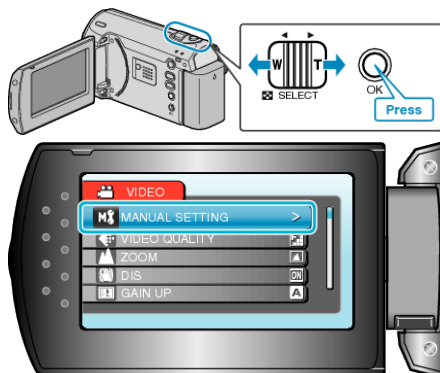
Setting Metering Area

You can set the brightness of a specified area as the standard.

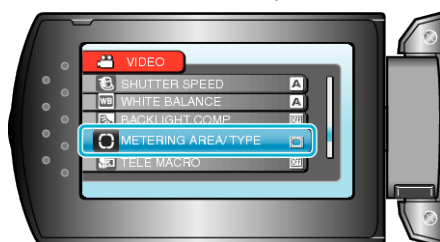
1 Press MENU to display the menu.



2 Select "MANUAL SETTING" with the ZOOM/SELECT lever and press OK.



3 Select "METERING AREA/ TYPE" and press OK.



4 Select "SPOT" and press OK.



- When "SPOT" is selected, select the position of the spot frame by pressing the +/- buttons. After selecting, press OK to confirm.

