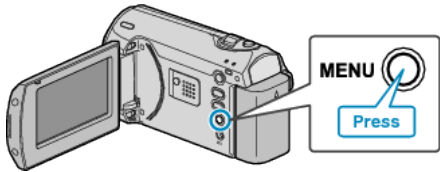


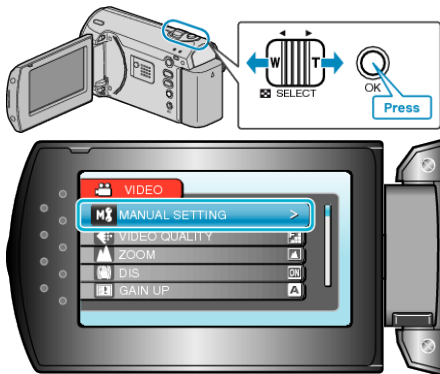
Scene Selection

Common scenes that are often encountered can be recorded with the most suitable settings.

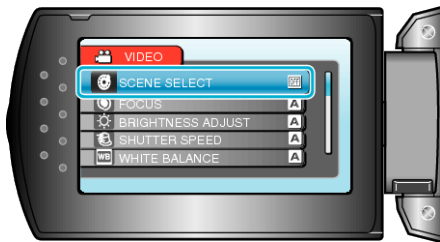
1 Press MENU to display the menu.



2 Select "MANUAL SETTING" with the ZOOM/SELECT lever and press OK.



3 Select "SCENE SELECT" and press OK.

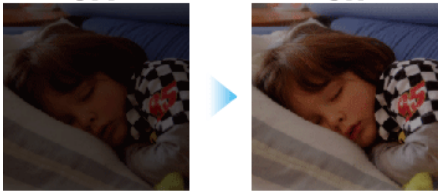
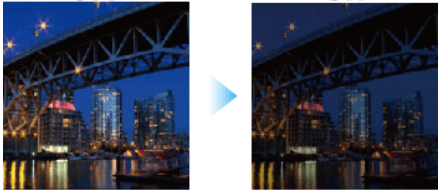
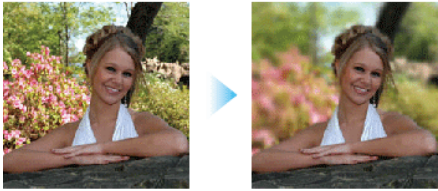
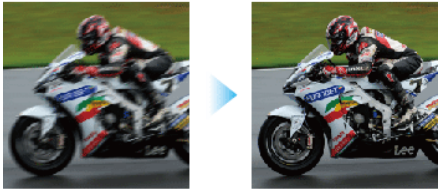
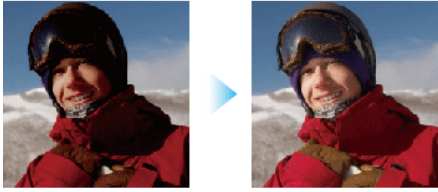


4 Select the scene and press OK.



• After setting, press MENU.

*The image is only an impression.

Setting	Effect
NIGHT EYE	Increases gain and brightens the scene automatically when the surrounding is dark. To prevent camera shake, use a tripod. OFF ON 
NIGHT	Captures night scenes naturally. OFF ON 
PORTRAIT	Blurs the background to bring out the people in the picture. OFF ON 
SPORTS	Captures fast-moving subjects clearly in every single frame. OFF ON 
SNOW	Prevents the subject from appearing too dark when recording snow scenes on a sunny day. OFF ON 
SPOTLIGHT	Prevents the human subject from appearing too bright under light. OFF ON 