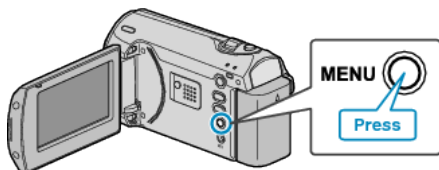


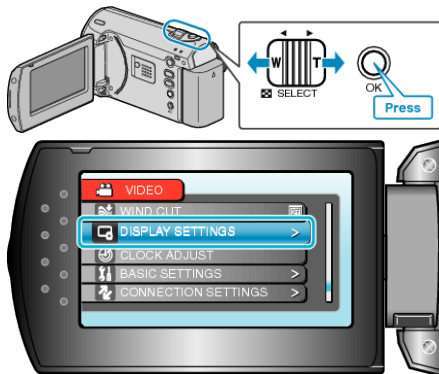
MONITOR BRIGHTNESS

Sets the brightness of the LCD monitor.

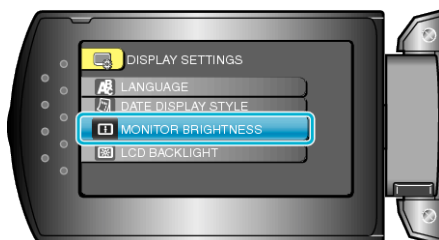
- 1 Press MENU to display the menu.



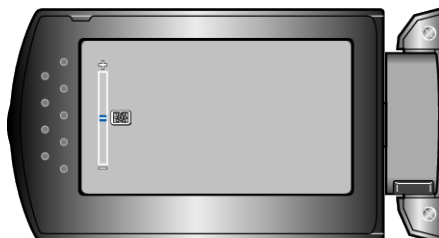
- 2 Select "DISPLAY SETTINGS" with the ZOOM/SELECT lever and press OK.



- 3 Select "MONITOR BRIGHTNESS" and press OK.



- 4 Adjust the brightness of the monitor.



- Press + to increase the brightness.
- Press - to decrease the brightness.
- After setting, press OK.