

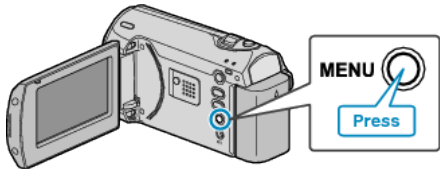
Taking Close-up Shots

You can take close-up shots of an object using the tele macro function.

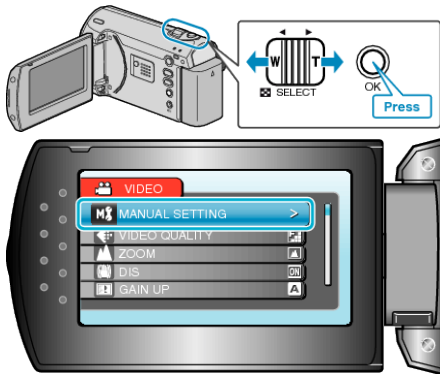


*The image is only an impression.

1 Press MENU to display the menu.



2 Select "MANUAL SETTING" with the ZOOM/SELECT lever and press OK.



3 Select "TELE MACRO" and press OK.



4 Select "ON" and press OK.



Setting	Details
OFF	Enables close-up shots up to 1 m at the telephoto (T) end. Enables close-up shots up to 5 cm at the wide angle (W) end.
ON	Enables close-up shots up to 50 cm at the telephoto (T) end. Enables close-up shots up to 5 cm at the wide angle (W) end.

CAUTION:

- When you are not taking close-up shots, set TELE MACRO to "OFF". Otherwise, the image may be blur.