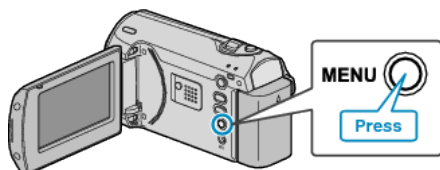


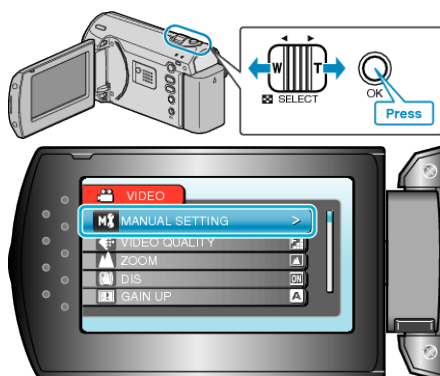
Setting Backlight Compensation

You can correct the image when the subject appears too dark due to backlight.

- 1 Press MENU to display the menu.



- 2 Select "MANUAL SETTING" with the ZOOM/SELECT lever and press OK.



- 3 Select "BACKLIGHT COMP." and press OK.



- 4 Select "ON" and press OK.

