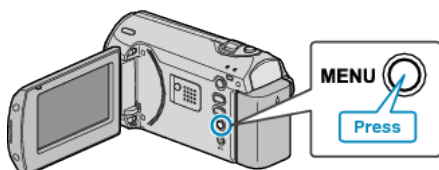


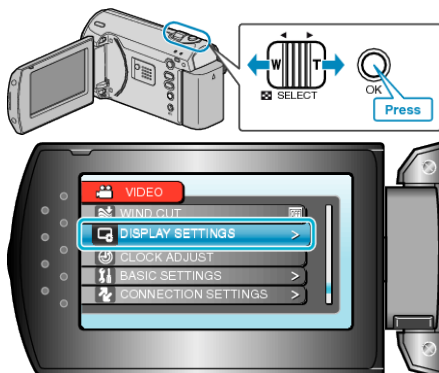
DATE DISPLAY STYLE

Sets the order of year, month, day and the time display format (24H/12H).

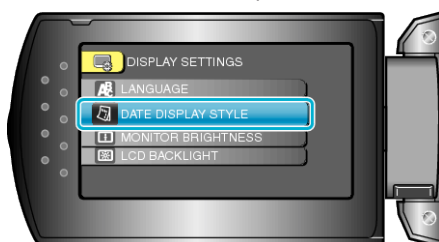
1 Press MENU to display the menu.



2 Select "DISPLAY SETTINGS" with the ZOOM/SELECT lever and press OK.



3 Select "DATE DISPLAY STYLE" and press OK.



4 Set the style of date and time display.



- For date display, set to any format from "month.day.year", "year.month.day", and "day.month.year".
- For time display, set to any format from "12h" and "24h".
- Use the ZOOM/SELECT lever to move the cursor and press the +/- buttons to make changes.
- After setting, press OK.