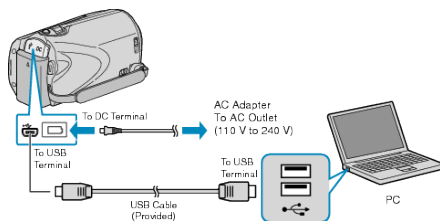


## Backing Up All Files

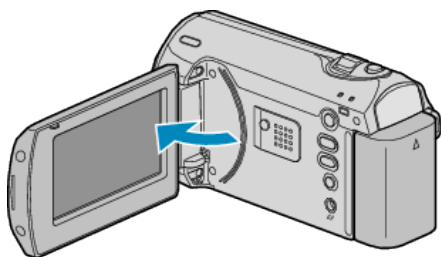
Before making backup, make sure that enough free space is left in the PC's hard disk (HDD).

1 Connect the USB cable and the AC adapter.



- ① Connect the AC adapter to this unit.
- ② Connect using the provided USB cable.

2 Open the LCD monitor.



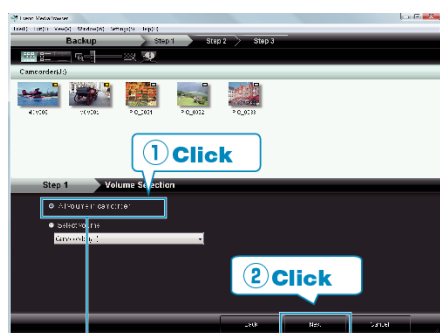
- The USB MENU appears.

3 Select "BACK UP" and press OK.



- The provided software Everio MediaBrowser starts up on the PC. The subsequent operations are to be performed on the PC.

4 Select the volume.

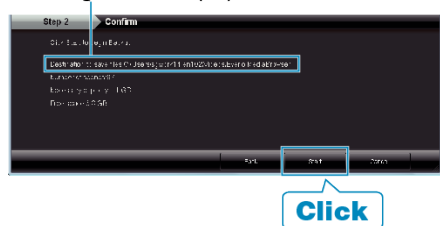


Click "All volume in camcorder"

Click "NEXT"

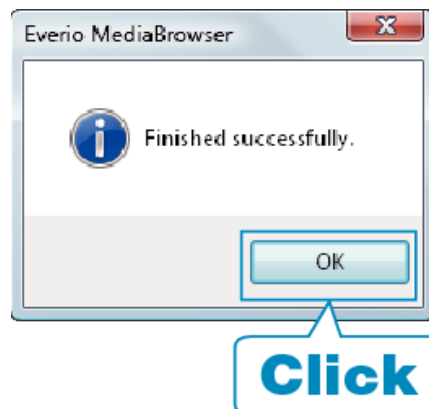
5 Start backup.

Saving Destination (PC)



- Backup starts.

6 After backup is complete, click "OK".



### Memo:

- Before making backup, load the SD card in which the videos are stored on this unit.
- If you encounter any problems with the provided software Everio MediaBrowser, please consult the "Pixela User Support Center".

<b>Tele-phone</b>	USA and Canada (English): +1-800-458-4029 (toll-free) Europe (UK, Germany, France, and Spain) (English/German/French/Spanish): +800-1532-4865 (toll-free) Other Countries in Europe (English/German/French/Spanish): +44-1489-564-764 Asia (Philippines) (English): +63-2-438-0090 China (Chinese): 10800-163-0014 (toll-free)
<b>Home-page</b>	<a href="http://www.pixela.co.jp/oem/jvc/mediabrowser/e/">http://www.pixela.co.jp/oem/jvc/mediabrowser/e/</a>

- Delete unwanted videos before making backup. It takes time to back up many videos.

### Disconnecting this Unit from PC

1 Click "Safely Remove Hardware".



2 Click "Safely Remove USB Mass Storage Device".

3 (For Windows Vista) Click "OK".

4 Disconnect the USB cable and close the LCD monitor.