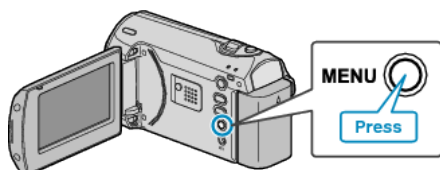


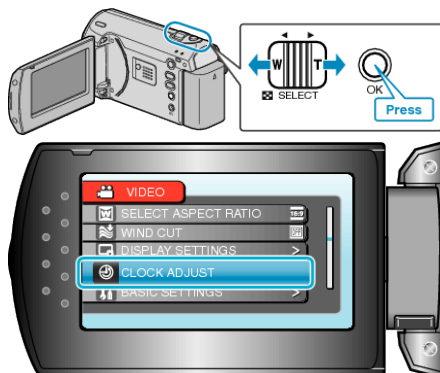
Resetting the Clock

Set the clock with "CLOCK ADJUST" from the menu.

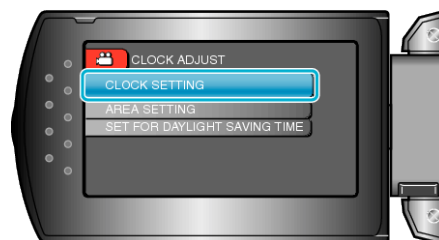
1 Press MENU to display the menu.



2 Select "CLOCK ADJUST" with the ZOOM/SELECT lever and press OK.



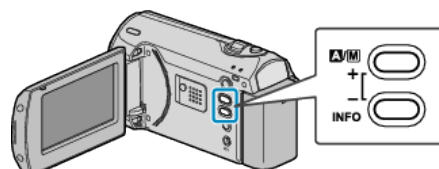
3 Select "CLOCK SETTING" and press OK.



4 Set the date and time.

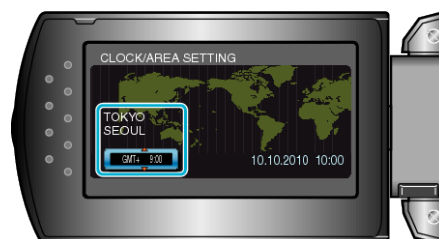


- Use the +/- button to adjust the year, month, day, hour, and minute in order.
 - +: Increases the number.
 - -: Decreases the number.



- Use the ZOOM/SELECT lever to move the cursor.
- After setting the date and time, press OK.

5 Select the region where you live with the +/- button and press OK.



- The city name and time difference are displayed.
- Press OK after the color of the selected region changes.