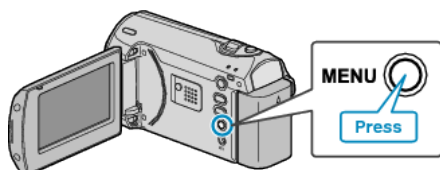


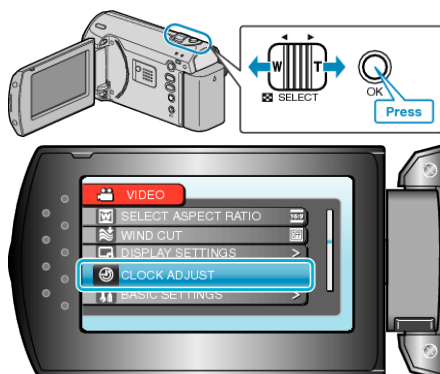
## Setting the Clock to Local Time when Traveling

Change the date and time display to the local time by selecting your travel destination in “AREA SETTING” of “CLOCK ADJUST”. Restore the region settings after you returned from the trip.

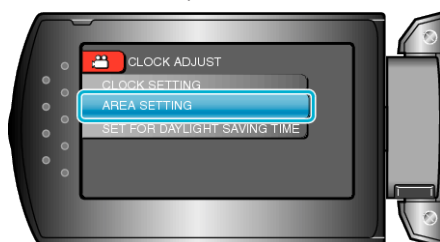
1 Press MENU to display the menu.



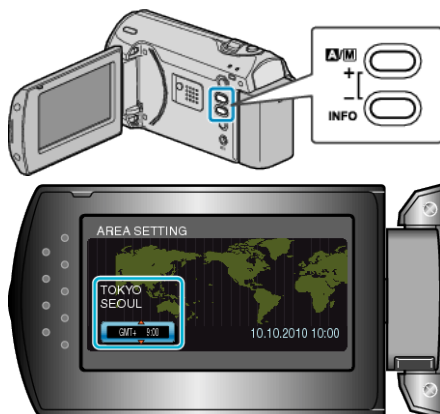
2 Select “CLOCK ADJUST” with the ZOOM/SELECT lever and press OK.



3 Select “AREA SETTING” and press OK.



4 Select the region where you live with the +/- button and press OK.



- The city name and time difference are displayed.

### Memo:

- Setting “AREA SETTING” changes the clock time such that time difference is accounted for.  
After returning to your country, re-select the region that was set initially to restore the original clock settings.