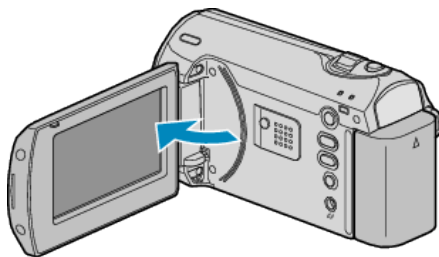


## Clock Setting

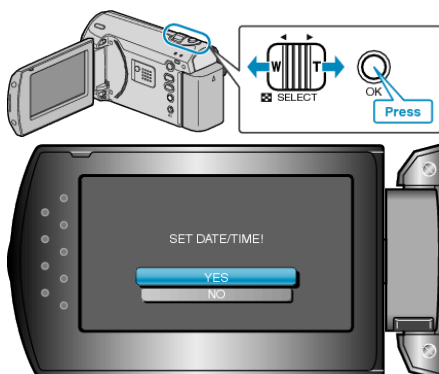
The “SET DATE/TIME!” screen appears when you turn on this unit for the first time after purchase, when it has not been used for a long time, or when the clock is not set yet.  
Set the clock before recording.

1 Open the LCD monitor.



- This unit turns on.
- When the LCD monitor is closed, this unit turns off.

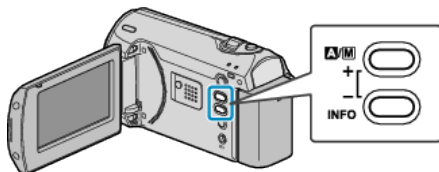
2 Select “YES” with the ZOOM/SELECT lever and press OK.



3 Set the date and time.



- Use the +/- button to adjust the year, month, day, hour, and minute in order.
  - +: Increases the number.
  - -: Decreases the number.



- Use the ZOOM/SELECT lever to move the cursor.
- After setting the date and time, press OK.

4 Select the region where you live with the +/- button and press OK.



- The city name and time difference are displayed.
- Press OK after the color of the selected region changes.

### Memo:

- The clock can be reset again later.
- When using this unit overseas, you can set it to the local time for recording.
- You can turn on or off the clock display during playback mode.