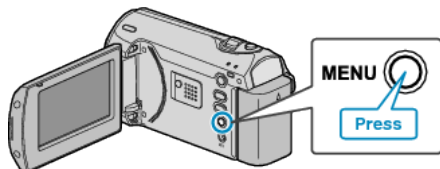


Recording at Intervals (TIME-LAPSE RECORDING)

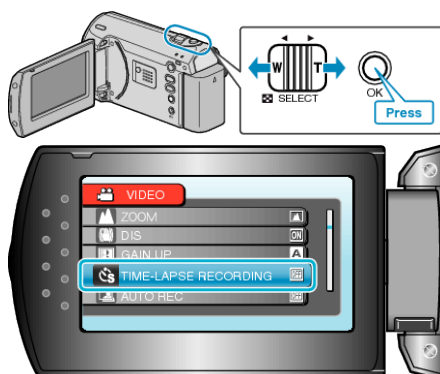
This function enables the changes of a scene that occur slowly over a long period to be shown within a short time by taking frames of it at a certain interval.

This is useful for making observations such as the opening of a flower bud.

- 1 Press MENU to display the menu.



- 2 Select "TIME-LAPSE RECORDING" with the ZOOM/SELECT lever and press OK.

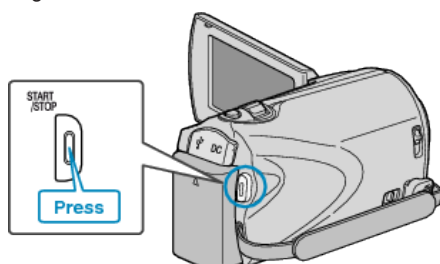


- 3 Select a recording interval (1 to 80 seconds) and press OK.



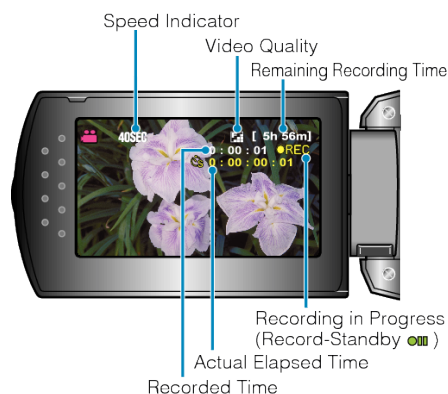
- The greater the number of seconds, the longer the recording interval.

- 4 Start recording.



- A frame is taken at intervals of the selected period.
- When the recording interval is set to "20SEC INTERVAL" or higher, this unit switches to the power-saving mode between recordings. At the next point to record, the power-saving mode will be turned off and recording will start automatically.
- Press the START/STOP button again to stop recording.

Indications During Time-Lapse Recording



Display	Description
Speed Indicator	Displays the recording interval that is set.
Video Quality	Displays the icon of the video quality that is set.
Remaining Recording Time	Remaining time left to record with the currently selected video quality.
Recording in Progress	Appears when video recording is in progress. When in the power-saving mode, it blinks.
Record-Standby	Appears when video recording is paused.
Actual Elapsed Time	Displays the actual elapsed time after recording starts.
Recorded Time	Displays the actual recorded time of the video. Recorded time increases in units of frames.

Time-Lapse Setting

The greater the number of seconds, the longer the recording interval.

Setting	Details
OFF	Deactivates the function.
1SEC INTERVAL	Takes a frame at 1-second intervals. Recorded videos will be played back at 30 times speed.
2SEC INTERVAL	Takes a frame at 2-second intervals. Recorded videos will be played back at 60 times speed.
5SEC INTERVAL	Takes a frame at 5-second intervals. Recorded videos will be played back at 150 times speed.
10SEC INTERVAL	Takes a frame at 10-second intervals. Recorded videos will be played back at 300 times speed.
20SEC INTERVAL	Takes a frame at 20-second intervals. Recorded videos will be played back at 600 times speed.
40SEC INTERVAL	Takes a frame at 40-second intervals. Recorded videos will be played back at 1 200 times speed.
80SEC INTERVAL	Takes a frame at 80-second intervals. Recorded videos will be played back at 2 400 times speed.

Recording

CAUTION:

- Audio cannot be recorded during time-lapse recording.
- Zooming and image stabilizer are not available in time-lapse recording.
- When recording is stopped with the recorded time less than "0:00:00:17", the video will not be saved.

Memo:

- Settings of time-lapse recording are saved even when the power is turned off.
When the power is turned on, "TIME LAPSE" appears on the screen.
 - Recording stops automatically 99 hours after it is started.
 - Make use of a tripod and AC adapter for time-lapse recordings with long intervals.
It is also recommended to fix the focus and white balance manually.
-