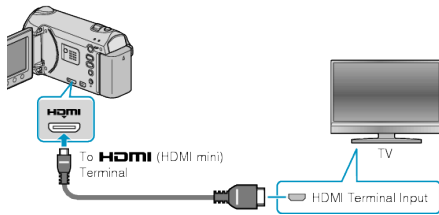


Connecting via the HDMI Mini Connector

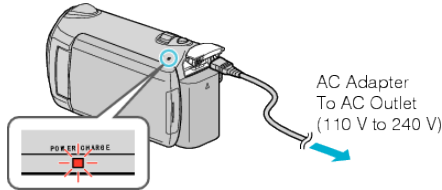
We recommend using the Category 2 HDMI cable (High Speed cable).

1 Connect to the TV.

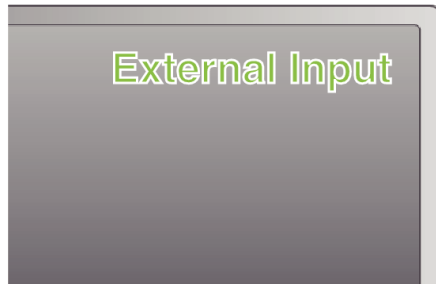


- Press and hold the power button  for 2 seconds or more to turn off the power.

2 Connect the AC adapter to this unit.



- ### 3 Press the external input button on the TV to switch to the input from this unit via the connected terminal.



4 Play back a file.



Memo:

- Change the settings in "HDMI OUTPUT" according to the connection.
- When connecting to the HDMI mini cable, the image or sound may not appear on the TV properly depending on the TV connected. In such cases, perform the following operations.
 - 1) Disconnect the HDMI mini cable and connect it again.
 - 2) Turn off and on this unit again.
- Connecting this unit to an HDMI-CEC-enabled TV using the HDMI cable allows you to utilize the following convenient functions.