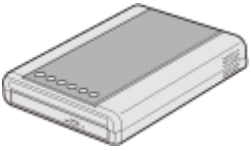



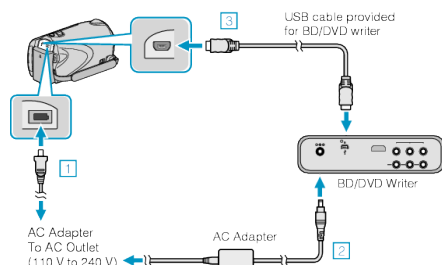
Playing Back a BD/DVD Created on this Unit (GZ-HM330)

BD/DVDs created using the backup function on this unit can be played back on TV using an optional DVD writer (DVDs only) with playback function (CU-VD50) or a normal BD/DVD player. DVDs can also be played back on this unit by connecting the optional DVD writer with playback function.

Playback Device	Illustration
DVD writer with playback function (CU-VD50)	
BD/DVD player or BD/DVD recorder that supports the BD/DVD-Video standard	

Playing Back with a BD/DVD Writer

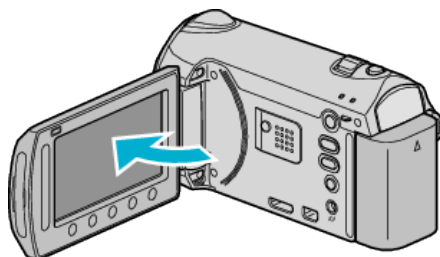
1 Connect the USB cable and AC adapter.



- ① Connect the AC adapter to this unit.
- ② Connect the AC adapter of the BD/DVD writer.
- ③ Connect the USB cable provided with the BD/DVD writer.

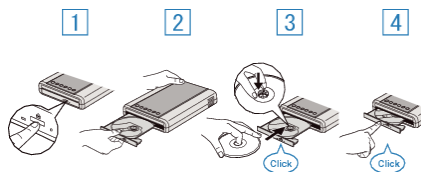
- To view on a TV, connect this unit to the TV.

2 Open the LCD monitor.



- The CREATE DVD menu appears.

3 Load a BD/DVD created on this unit.



- ① Press the power button to turn on the power.
- ② Press the eject button to open the disc tray.
- ③ Pull out the tray completely and load a new disc properly.
- ④ Push the disc tray in until it clicks into place.

4 Select "PLAYBACK" and touch .



5 Select the desired file and touch .

- Touch  to stop playback.

CAUTION:

- Be sure to turn off the power when connecting the devices. Otherwise, electric shocks or malfunctions may occur.

Memo:

- Only BD/DVDs created on this unit can be played back.
- Chapters are not displayed on the menu.

Digest Playback

You can view a few seconds of each video in the disc continuously by playing back the created disc in a player and selecting "DIGEST PLAYBACK" from the top menu. Use this to check the content of videos or to look for the desired scene.

- To return to normal playback, press the top menu button on the remote control of the player and select "TO NORMAL PLAYBACK".

