

Taking Group Shots (Self-timer)

The 10-second self-timer and Face Detection self-timer are convenient functions for taking group photos.

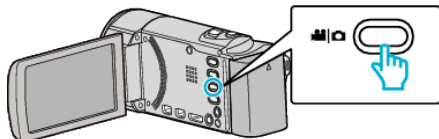
The 2-second self-timer is useful for preventing camera shake caused by pressing the shutter button.

Memo :

When shooting a photo using the self-timer function, use of a tripod is recommended.

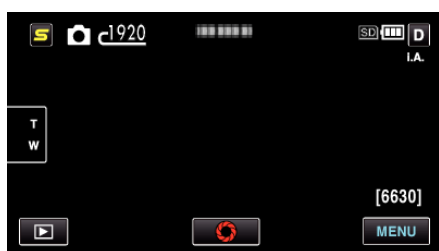
Using the 2-/10-second Self-timer

- 1 Select still image mode.



- The still image mode icon appears.

- 2 Tap "MENU".



- 3 Tap "SELF-TIMER".

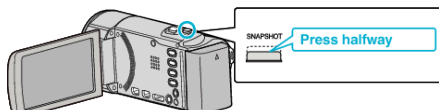


- Tap \wedge or \vee to move upward or downward for more selection.
- Tap X to exit the menu.
- Tap \curvearrowright to return to the previous screen.

- 4 Tap "2SEC" or "10SEC".

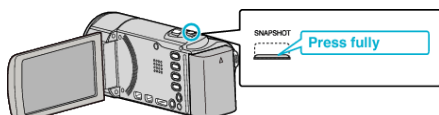


- 5 Set the focus on the subject.



- When focused, the focus icon lights up in green.

- 6 Take a still image.

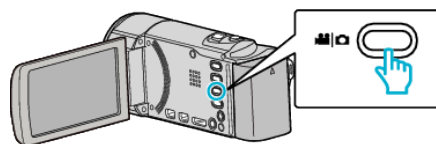


- A timer appears and countdown to shooting starts.
- To stop the self-timer, press the SNAPSHOT button again.

Using the Face Detection Self-timer

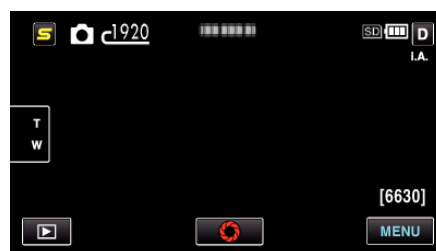
Pressing the SNAPSHOT button starts face detection, and shooting is performed three seconds after another person enters the frame. This function is useful when you want to include the photographer in the group photo.

- 1 Select still image mode.



- The still image mode icon appears.

- 2 Tap "MENU".



- 3 Tap "SELF-TIMER".

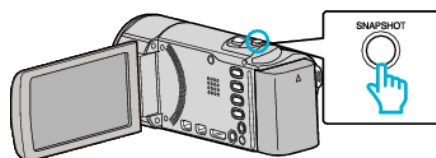


- Tap \wedge or \vee to move upward or downward for more selection.
- Tap X to exit the menu.
- Tap \curvearrowright to return to the previous screen.

- 4 Tap "FACE DETECTION".



- 5 After making sure that everyone is facing the camera, press the SNAPSHOT button.



- Frames appear around the faces of the subjects.
- Pressing the SNAPSHOT button again starts the 10-second self-timer.

- 6 The photographer enters the frame.

Photographer



- The shutter is released three seconds after the photographer enters the frame.
- To stop the self-timer, press the SNAPSHOT button again.

Memo : _____

- The "FACE DETECTION" function may fail to detect faces depending on the shooting environment.
-