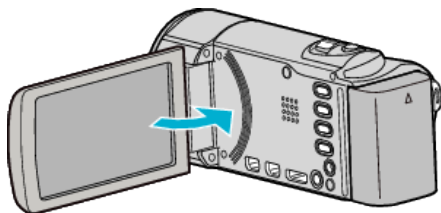


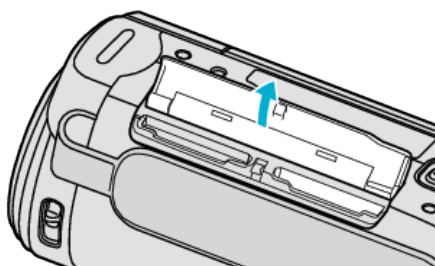
## Inserting an SD Card (GZ-HM650/GZ-HM670)

When a commercially available SD card is inserted, recordings can still be made to the card without stopping when the remaining recording time on the built-in memory runs out.

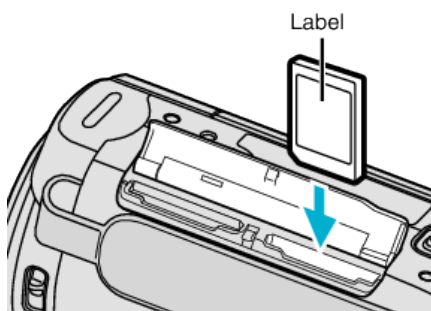
- 1 Close the LCD monitor.



- 2 Open the cover.



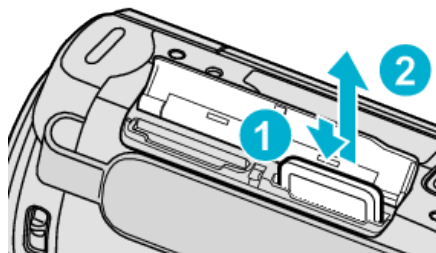
- 3 Insert an SD card.



- Insert with the label facing outward.

## Removing the Card

Push the SD card inward once, then pull it out straight.



### Warning

- Make sure not to insert the card in the wrong direction. It may cause damage to the unit and card.
- Turn off the power of this unit before inserting or removing a card.
- Do not touch the metal contact area when inserting the card.

### Memo :

- When "SEAMLESS RECORDING" is set to "ON", recordings can still be made to the SD card without stopping when the remaining recording time on the built-in memory runs out.
- To record to the card, it is necessary to perform media settings. When no card is available, set media settings to "BUILT-IN MEMORY" for recording.
- To use cards that have been used on other devices, it is necessary to format (initialize) the card using "FORMAT SD CARD" from media settings.