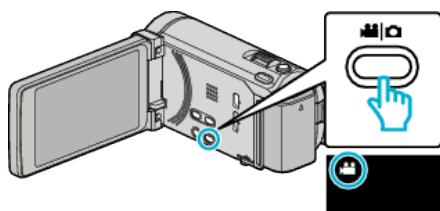


## Recording at Intervals (TIME-LAPSE RECORDING)

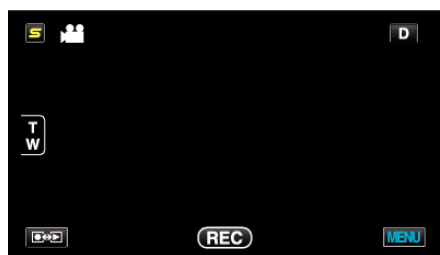
Enables the changes of a scene that occur slowly over a long period to be shown within a short time by taking frames of it at a certain interval. This is useful for making observations such as the opening of a flower bud.

- 1 Open the LCD monitor and select the video mode.

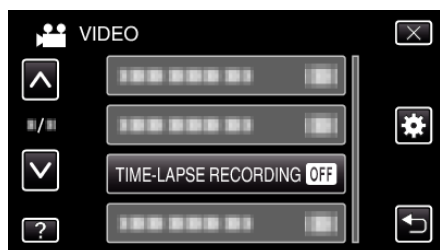


- The video mode icon appears.

- 2 Tap "MENU".

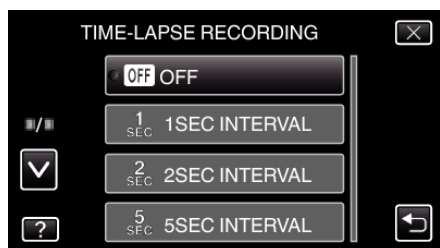


- 3 Tap "TIME-LAPSE RECORDING".



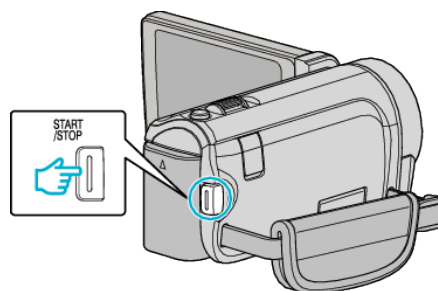
- Tap  $\wedge$  or  $\vee$  to move upward or downward for more selection.
- Tap  $\times$  to exit the menu.
- Tap  $\hookrightarrow$  to return to the previous screen.

- 4 Tap to select a recording interval (1 to 80 seconds).



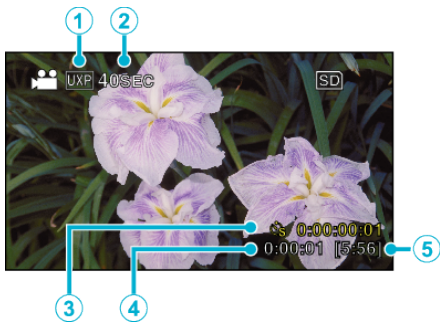
- The greater the number of seconds, the longer the recording interval.
- Tap  $\wedge$  or  $\vee$  to move upward or downward for more selection.
- Tap  $\times$  to exit the menu.
- Tap  $\hookrightarrow$  to return to the previous screen.

- 5 Start recording.



- A frame is taken at intervals of the selected period.
- When the recording interval is set to "20SEC INTERVAL" or higher, this unit switches to the power-saving mode between recordings. At the next point to record, the power-saving mode will be turned off and recording will start automatically.
- Press the START/STOP button again to stop recording.

Indications During Time-Lapse Recording



	Display	Description
①	Video Quality	Displays the icon of the video quality that is set.
②	Speed Indicator	Displays the recording interval that is set.
③	Recorded Time	Displays the actual recorded time of the video. Recorded time increases in units of frames.
④	Actual Elapsed Time	Displays the actual elapsed time after recording starts.
⑤	Remaining Recording Time	Remaining time left to record with the currently selected video quality.

Time-Lapse Setting

The greater the number of seconds, the longer the recording interval.

Setting	Details
OFF	Deactivates the function.
1SEC INTERVAL	Takes a frame at 1-second intervals. Recorded videos will be played back at 25 times speed.
2SEC INTERVAL	Takes a frame at 2-second intervals. Recorded videos will be played back at 50 times speed.
5SEC INTERVAL	Takes a frame at 5-second intervals. Recorded videos will be played back at 125 times speed.
10SEC INTERVAL	Takes a frame at 10-second intervals. Recorded videos will be played back at 250 times speed.
20SEC INTERVAL	Takes a frame at 20-second intervals. Recorded videos will be played back at 500 times speed.
40SEC INTERVAL	Takes a frame at 40-second intervals. Recorded videos will be played back at 1000 times speed.
80SEC INTERVAL	Takes a frame at 80-second intervals. Recorded videos will be played back at 2000 times speed.

Caution :

- Audio cannot be recorded during time-lapse recording.
- Zooming, simultaneous still image recording, and image stabilizer are not available in time-lapse recording.
- When recording is stopped with the recorded time less than “0:00:00:14” , the video will not be saved.
- Seamless recording is disabled in time-lapse recording.

Memo :

- Settings of time-lapse recording are not saved when the power is turned off.
- Recording stops automatically 99 hours after it is started.
- Make use of a tripod and AC adapter for time-lapse recordings with long intervals.  
It is also recommended to fix the focus and white balance manually.