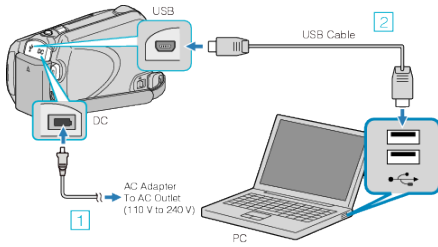


### Backing Up All Files

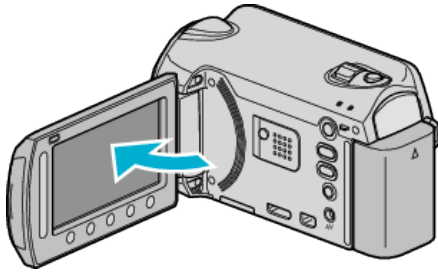
Before making backup, make sure that enough free space is left in the PC's hard disk (HDD).

1 Connect the USB cable and AC adapter.



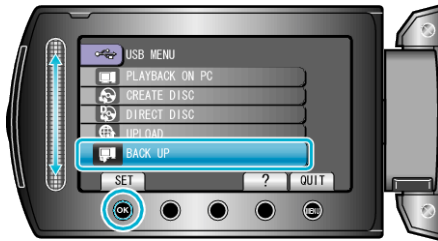
- 1 Connect the AC adapter to this unit.
- 2 Connect using the provided USB cable.

2 Open the LCD monitor.



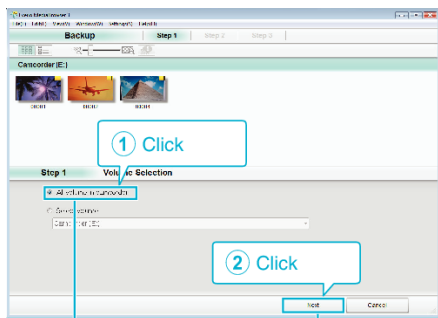
- The USB MENU appears.

3 Select "BACK UP" and touch **OK**.



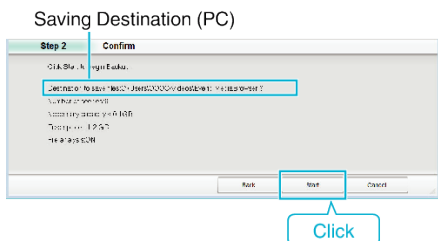
- The provided software Everio MediaBrowser starts up on the PC. The subsequent operations are to be performed on the PC.

4 Select the volume.



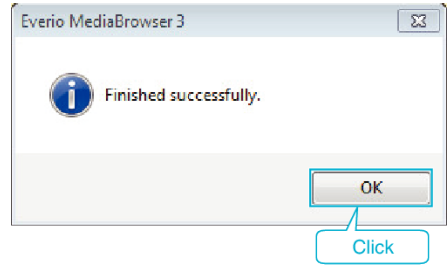
Click "All volume in camcorder"

5 Start backup.



- Backup starts.

6 After backup is complete, click "OK".



**Memo :**

- Before making backup, load the microSD card in which the videos and still images are stored on this unit.
- If you encounter any problems with the provided software Everio MediaBrowser, please consult the "Pixela User Support Center".
- Delete unwanted videos before making backup. It takes time to back up many videos.

### Disconnecting this Unit from PC

- 1 Click "Safely Remove Hardware".



- 2 Click "Safely Remove USB Mass Storage Device".
- 3 (For Windows Vista) Click "OK".
- 4 Disconnect the USB cable and close the LCD monitor.