

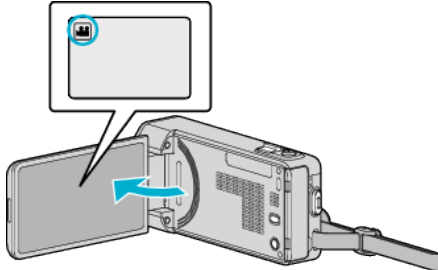
Moving Files to an SD Card

You can move videos and still images from the built-in memory to SD card. Files that are moved will be deleted from the built-in memory. Moving still images to SD cards makes it convenient to bring them to the shop for printing (developing).

Caution :

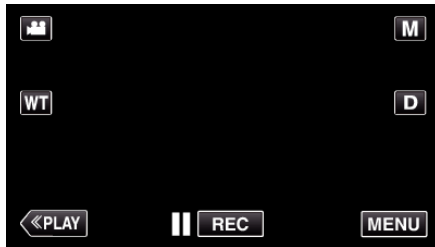
- Make sure that there is enough space left in the destination medium.
- Videos in the SD card cannot be moved to the built-in memory.

1 Open the LCD monitor.



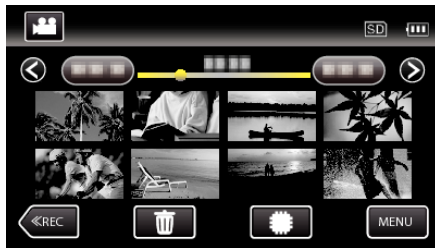
2 Tap or to select the video or still image mode.

3 Tap "<<PLAY" to select the playback mode.

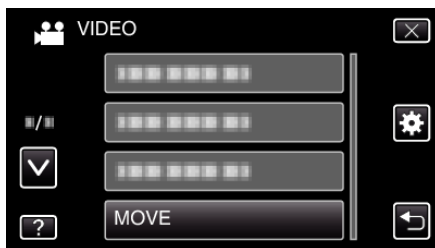


- The mode changes between recording and playback with every tap.

4 Tap "MENU".



5 Tap "MOVE".

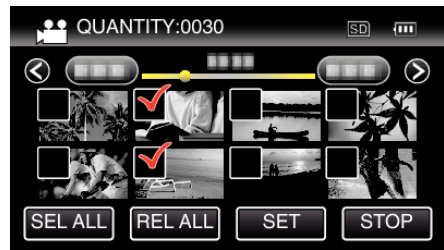


6 Tap on the files to move.



- ✓ appears on the selected files.
To remove ✓ from a file, tap on the file again.
- Tap "SEL ALL" to select all files.
- Tap "REL ALL" to release all selections.

7 Tap "SET".



- "SET" is deactivated when no file is selected.

8 Tap "YES".



- Moving of files starts.
- After moving, tap "OK".