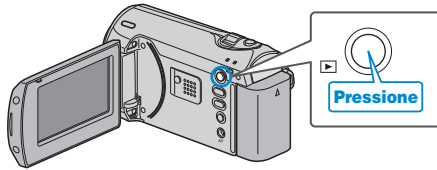


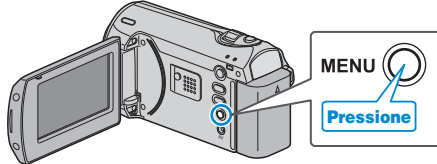
Protegendo Todos os Arquivos

Protege todos os arquivos.

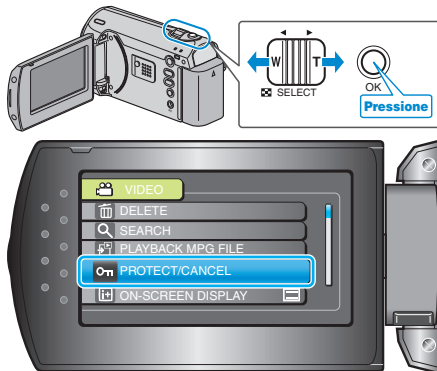
1 Seleccione o modo de reprodução.



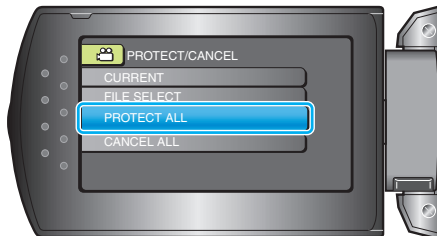
2 Pressione o botão MENU para exibir o menu.



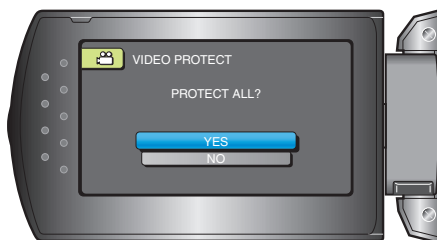
3 Seleccione "PROTECT/CANCEL" (Proteger / Cancelar) com o botão ZOOM/SELECT e pressione OK.



4 Seleccione "PROTECT ALL" (Proteger todos) e pressione OK.



5 Seleccione "YES" (Sim) e pressione OK.



- Após o ajuste, pressione OK.