

## Preparing a BD Writer

### Memo:

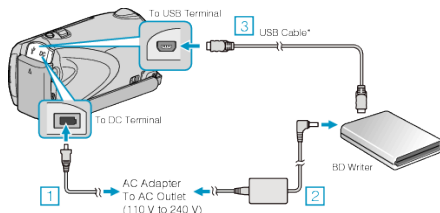
When connecting to the external Blu-ray drive, use a USB cable with Mini-A (Male) – B (Male) connectors.

The USB cable bundled with this camera cannot be used.

To use the USB cable provided with the external Blu-ray drive, purchase the USB extension cable.

- Mini-A (Male) – A (Female)  
(Part number: QAM0852-001)

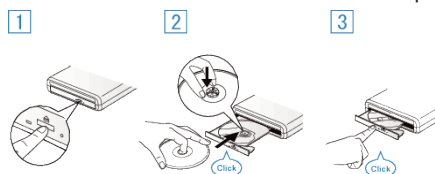
### 1 Connect the USB cable and AC adapter.



- ① Connect the AC adapter to this unit.
  - ② Connect the AC adapter of the BD writer.
  - ③ Connect the USB cable of the BD writer to this unit.
- Refer also to the instruction manual of the BD writer.

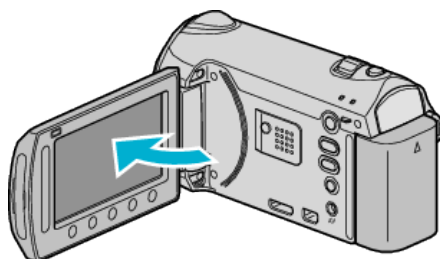
### 2 Insert a new disc.

- Press the power button on the BD writer to turn on the power.



- ① Press the eject button to open the disc tray.
- ② Pull out the tray completely and load a new disc properly.
- ③ Push the disc tray in until it clicks into place.

### 3 Open the LCD monitor.



- The CREATE DVD menu appears.
- While the USB cable is connected, the CREATE DVD menu is displayed.

### CAUTION:

- Be sure to turn off the power when connecting the devices.  
Otherwise, electric shocks or malfunctions may occur.