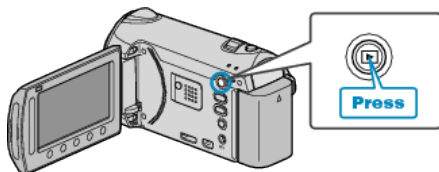


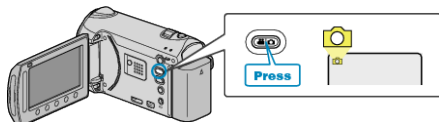
## Transferring Still Images to Bluetooth-compliant Devices

When Bluetooth connection is established with a BIP/OPP-compliant device, you can transfer recorded still image data to this device.

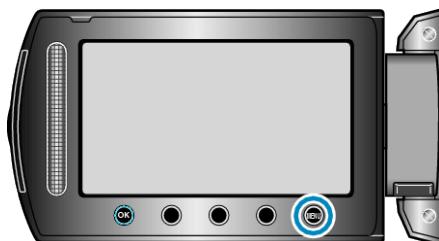
- 1 Select the playback mode.



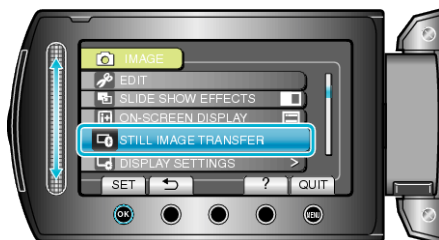
- 2 Select still image mode.



- 3 Touch  $\odot$  to display the menu.



- 4 Select "STILL IMAGE TRANSFER" and touch  $\odot$ .



- 5 Set the connected device to the data reception mode.

- For detailed operating instructions, refer to the instruction manual of the connected device.

- 6 Check to ensure that the image to be transferred is correct, select "YES", and touch  $\odot$ .



- The image to be transferred is displayed on this screen.
- Touch the operation buttons " $\leftarrow$ " / " $\rightarrow$ " to select the previous or next file.
- After image transfer is complete, touch  $\odot$ .

### Memo:

- If the connected device is compliant with both BIP and OPP, BIP connection takes priority. Selection of connection is not possible. OPP connection will only take place if BIP connection fails.
- Before starting image transfer, be sure to turn on the Bluetooth connectivity of the connected device and set it to the data reception mode. Transmission will fail if the Bluetooth connectivity is set after image transfer starts.
- Only one still image can be transferred at a time. To transfer more still images, repeat the same steps.
- Still images cannot be transferred from the connected device to the camcorder.
- Depending on the specifications of the connected device, you may not be able to see or edit the file even if it is transferred successfully. To see or edit the file on the connected device, refer to the instruction manual of the connected device for the compatible image size. Set to the same or smaller image size when recording.

#### About BIP Connection :

- The conditions (image size, data size) for still image transfer are obtained from the connected device. Still images are then transferred as follows according to the obtained conditions.
  - (1) If the image size meets the conditions, the image will be transferred without any changes.
  - (2) If the image size is too big, the image will be reduced to VGA (640×480) or FWVGA (854×480).
  - (3) If the data size is too big, the image will also be reduced to VGA (640×480) or FWVGA (854×480).

#### About OPP Connection :

- Still image transfer may fail even if the connected device is compliant with OPP connection. It depends on the file format that can be received by the device.
- Regardless of the image size, the still image to transfer will be reduced to the following sizes.
  - For still images with 4:3 aspect ratio: VGA (640×480)
  - For still images with 16:9 aspect ratio: FWVGA (854×480)