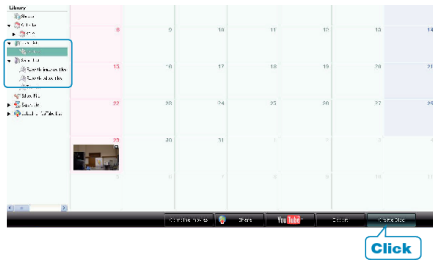


Recording Videos to Discs

Copy the files that are arranged using the user list to DVDs.

- 1 Insert a new disc into the PC's recordable BD/DVD drive.
- 2 Select the desired user list.



- 3 Select the disc type.

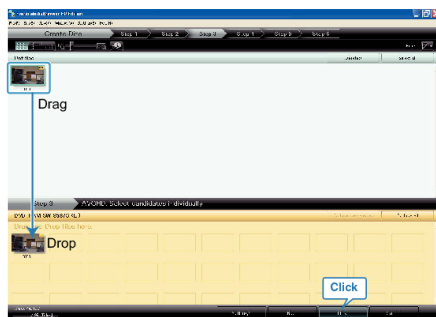


- Image quality is set to standard when DVD-Video is selected.

- 4 Select the method of file selection.



- If you select "Select all files displayed", only the displayed videos are copied to the disc. Proceed to step 6.
 - If you select "Select files individually", proceed to step 5.
- 5 (When "Select files individually" is selected) Select the files to copy to disc in order.



- After selecting, click "NEXT".

- 6 Set the top menu of the disc.



- Set the title and menu background.

- 7 Copying to disc starts.



- After copying, click "OK".

Memo:

- The following types of discs can be used on the provided software Everio MediaBrowser.
 - DVD-R
 - DVD-R DL
 - DVD-RW
 - DVD+R
 - DVD+R DL
 - DVD+RW
 - BD
- Everio MediaBrowser supports 3 disc formats: DVD-Video, AVCHD and BD.
- When copying videos recorded in XFP recording mode to create an AVCHD disc, the videos need to be converted to XP recording mode before copying. Therefore, it may take a longer time than copying videos recorded in other modes.
- Use Everio MediaBrowser Player to play back the disc. Refer to the help file of the provided Everio MediaBrowser software to operate.
- To view the help file of Everio MediaBrowser, select "Help" from the Everio MediaBrowser's menu bar or press F1 on the keyboard.
- If you encounter any problems with the provided software Everio MediaBrowser, please consult the "Pixela User Support Center".

Telephone	USA and Canada (English): +1-800-458-4029 (toll-free) Europe (UK, Germany, France, and Spain) (English/German/French/Spanish): +800-1532-4865 (toll-free) Other Countries in Europe (English/German/French/Spanish): +44-1489-564-764 Asia (Philippines) (English): +63-2-438-0090 China (Chinese): 10800-163-0014 (toll-free)
Home-page	http://www.pixela.co.jp/oem/jvc/mediabrowser/e/