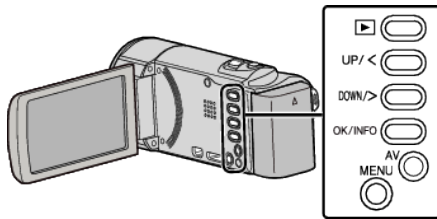


Backing Up All Files

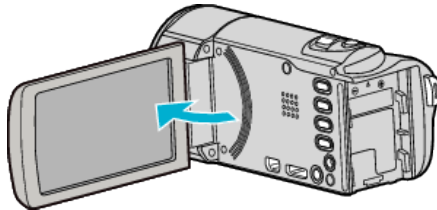
Before making backup, make sure that enough free space is left in the computer's hard disk (HDD).

Memo :

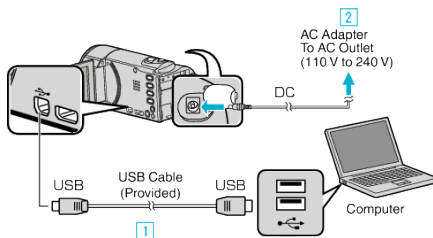
To select/move cursor towards up/left or down/right, press the button UP/< or DOWN/>.



- 1 Open the LCD monitor.



- 2 Connect the USB cable and the AC adapter.

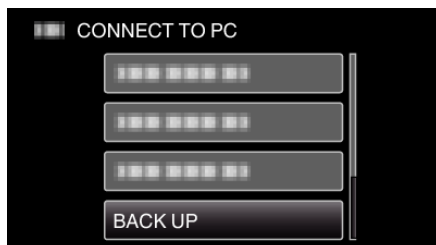


- 1 Connect using the provided USB cable.
 - 2 Connect the AC adapter to this unit.
- This unit powers on automatically when the AC adapter is connected.
 - Be sure to use the supplied JVC AC adapter.
 - 3 The "SELECT DEVICE" menu appears.
- 3 Select "CONNECT TO PC" and press OK.



- Press UP/< or DOWN/> to move the cursor.

- 4 Select "BACK UP" and press OK.



- Press UP/< or DOWN/> to move the cursor.
 - To cancel and return to the previous screen, press MENU.
 - The provided software Everio MediaBrowser 3 starts up on the computer.
- The subsequent operations are to be performed on the computer.

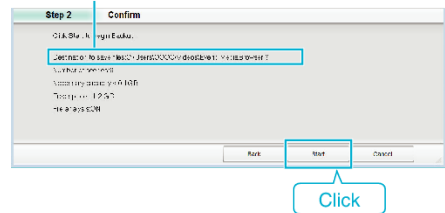
- 5 Select the volume.



Click "All volume in camcorder"

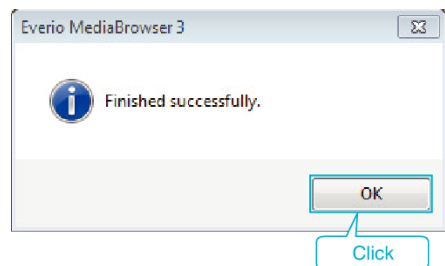
- 6 Start backup.

Saving Destination (PC)



- Backup starts.

- 7 After backup is complete, click "OK".



Memo :

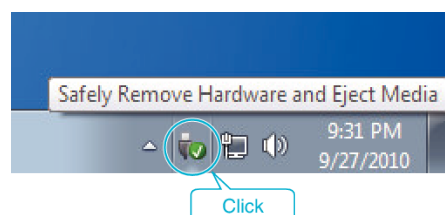
- Before making backup, load the SD card in which the videos are stored on this unit.
- After backing up your files using the provided software, they cannot be restored to this unit.
- If you encounter any problems with the provided software Everio MediaBrowser 3, please consult the "Pixela User Support Center".

Telephone	USA and Canada (English): +1-800-458-4029 (toll-free) Europe (UK, Germany, France, and Spain) (English/German/French/Spanish): +800-1532-4865 (toll-free) Other Countries in Europe (English/German/French/Spanish): +44-1489-564-764 Asia (Philippines) (English): +63-2-438-0090 China (Chinese): 10800-163-0014 (toll-free)
Homepage	http://www.pixela.co.jp/oem/jvc/mediabrowser/e/

- Delete unwanted videos before making backup.
It takes time to back up many videos.

Disconnecting this Unit from Computer

- 1 Click "Safely Remove Hardware and Eject Media".



- 2 Click "Safely Remove USB Mass Storage Device".

Copying

- 3** (For Windows Vista) Click “OK”.
- 4** Disconnect the USB cable and close the LCD monitor.