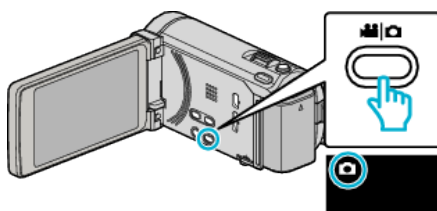


Taking Still Images in Intelligent Auto Mode

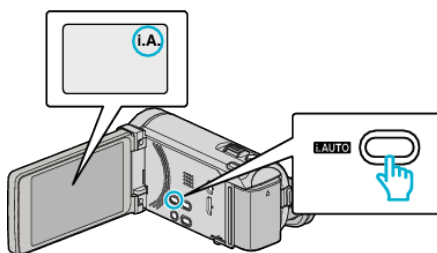
You can record without worrying about the setting details by using the Intelligent Auto mode.

- 1 Open the LCD monitor and select the still image mode.



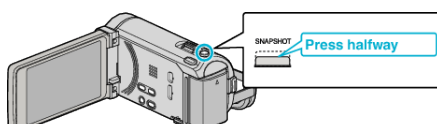
- The still image mode icon appears.

- 2 Check if the recording mode is Intelligent Auto.



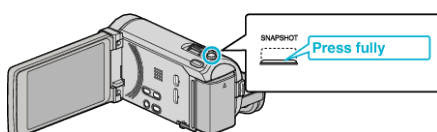
- If the mode is **M** Manual, press the i.AUTO button to switch.
The mode changes between Intelligent Auto and Manual with every press.

- 3 Set the focus on the subject.



- When focused, the focus icon lights up in green.

- 4 Take a still image.

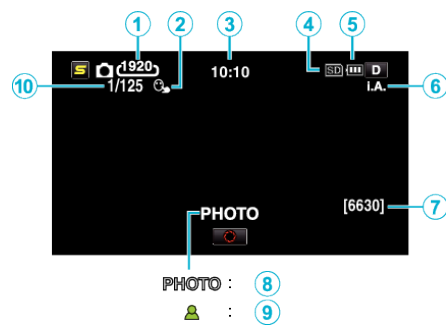


- PHOTO lights up when a still image is being captured.
- Some displays disappear after approximately 3 seconds.
Use the **D** button to change the displays.

Memo :

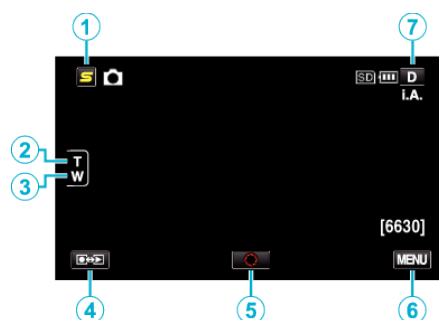
- 3D images are supported by the LCD monitor of this unit. This allows you to check the 3D effect while recording. To switch to 3D mode, refer to "Playing Back 3D Images". (for GZ-HM970/GZ-HM965)
- When recording in 3D mode, the image is recorded in 2D even though the display on the LCD monitor is 3D. (for GZ-HM970/GZ-HM965)
- Continuous recording of still images (continuous shooting) can be performed on this unit.

Indications During Still Image Recording



	Display Icon	Description
①	Image Size	Displays the icon of the image size. <ul style="list-style-type: none">• The size of still images can be changed.
②	TOUCH PRIORITY AE/AF	Displays the setting of “TOUCH PRIORITY AE/AF”. By default, it is set to “FACE TRACKING”.
③	Time	Displays the current time.
④	Recording Media	Displays the icon of the media where still images are recorded to. The recording media can be changed.
⑤	Battery Indicator	Displays the approximate remaining battery power. Details of the battery power can be displayed by pressing the INFO button.
⑥	Recording Mode	Press the i.AUTO button to switch the recording mode between i.A. (Intelligent Auto) and M (Manual).
⑦	Remaining Number of Shots	Displays the remaining number of shots for still image recording.
⑧	Recording in Progress	“PHOTO” appears when a still image is being captured.
⑨	Focus	Lights up in green when focused.
⑩	Shutter Speed	Displays the shutter speed.

Operation Buttons for Still Image Recording



	Operation Button	Description
①	Face Short Cut Menu Button	Displays a short cut screen of face recognition functions.
② / ③	T/W Zoom	Allows the same functions as the zoom lever to be performed. Camera shake that often occurs when using the zoom lever can be minimized.
④	Recording/Playback Mode	Switches between recording and playback modes.
⑤	Snapshot 	Functions as the SNAPSHOT button. However, focus cannot be set by pressing halfway.
⑥	MENU	Displays the various menus of still image recording.
⑦	Display Button D	<p>Some displays disappear after approximately 3 seconds. Use the D button to change the displays as shown below.</p> <ul style="list-style-type: none"> • Tap D button Displays appear for approximately 3 seconds with every tap. • Tap and hold D button Displays are fixed such that they do not disappear. After setting, the display button changes from D to D?. Tap D? to release the displays.

Useful Settings for Recording

- When "AUTO POWER OFF" is set to "ON", this unit turns itself off automatically to conserve power when it is not operated for 5 minutes. (only when using the battery pack)
- When "TOUCH PRIORITY AE/AF" is set to "FACE TRACKING", this unit detects faces and automatically adjusts its brightness and focus to record the faces more clearly.

Caution :

- Do not expose the lens to direct sunlight.
- Do not use this unit in the rain, snow, or places with high humidity like the bathroom.
- Do not use this unit in places subject to excessive humidity or dust, as well as places exposed to steam or smoke directly.
- Do not remove the battery pack, AC adapter, or SD card when the access lamp is lighted. The recorded data may become unreadable.
- This unit is a microcomputer-controlled device. Electrostatic discharge, external noise and interference (from a TV, a radio, etc.) might prevent it from functioning properly. In such a case, turn off the power, then remove the AC adapter and battery pack. This unit will be reset.

Memo :

- Before recording an important scene, it is recommended to conduct a trial recording.
- The digital image stabilizer does not work when recording still images.
- Depending on the shooting conditions, the four corners of the screen may appear dark, but this is not a malfunction. In this case, change the shooting conditions by moving the zoom lever, etc.