

Preparing an External Blu-ray Drive

Memo :

When connecting to the external Blu-ray drive, use a USB cable with Mini-A (Male) – B (Male) connectors.

The USB cable provided with this unit cannot be used.

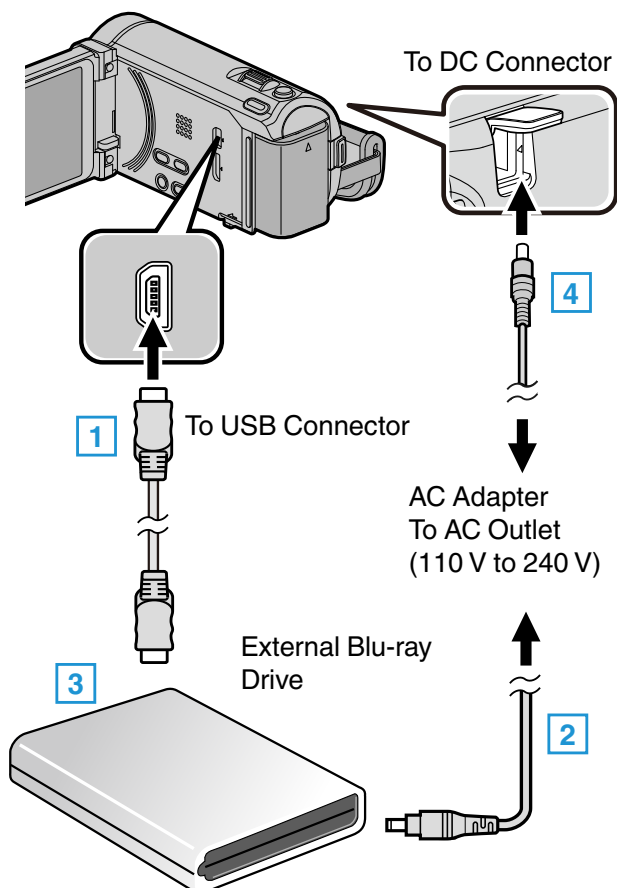
- To use the USB cable with the external Blu-ray drive, purchase the USB extension cable.

Mini-A (Male) – A (Female)

(Part number: QAM0852-001)

1 Connect the USB cable and the AC adapter.

- Turn off the camcorder by pressing the  button for about 2 seconds.



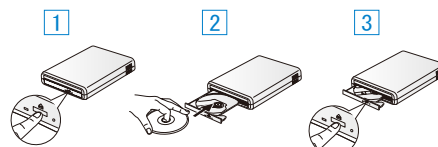
* The AC adapter shown in the illustration is AC-V10M.

- 1 Connect the USB cable of the external Blu-ray drive to this unit.
- 2 Connect the AC adapter of the external Blu-ray drive.
- 3 Turn on the external Blu-ray drive.
- 4 Connect the AC adapter to this unit.

- This unit powers on automatically when the AC adapter is connected.
- This unit turns on and the "BACK-UP" menu appears.
- While the USB cable is connected, the "BACK-UP" menu is displayed.
- Refer also to the instruction manual of the external Blu-ray drive.

2 Insert a new disc.

- Press the power button on the external Blu-ray drive to turn on the power.



- 1 Press the eject button to open the disc tray.
- 2 Load a new disc properly.
- 3 Press the eject button to close the disc tray.

Caution :

- Be sure to turn off the power when connecting the devices. Otherwise, electric shocks or malfunctions may occur.